

GÜHRING

GU 3FS

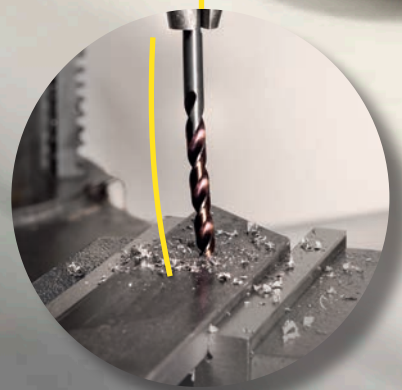
THE DRILL WITH
3-FLATS ON SHANK

**SHARP.
FAST.
SAFE.**





3 flats on shank
Prevents slipping in the chuck.
For optimum torque transmission.
No spinning at the hole exit.



Reduced breakage due to high elasticity
Co-alloyed high speed steel ensures long
tool life and wear resistance.

3 FLATS, 3 ADVANTAGES: **SHARP, FAST, SAFE**

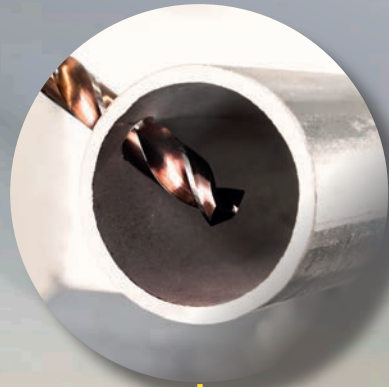
YOU WANT TO MAKE YOUR DRILLING PROCESSES MORE EFFECTIVE?

With the GU 3FS precision drill you drill fast and safely thanks to the 4-facet precision grinding and the split point geometry. With low drilling pressure you can achieve fast and uncomplicated machining progress.

Optimal chip evacuation
thanks to round chip flute design.



4-facet precision grinding
The low drilling pressure and the excellent self-centering allow particularly dimensionally accurate holes.



Universal application thanks to
point angle of 135 °.

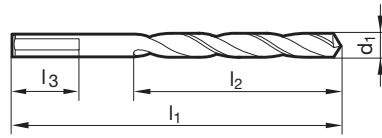


Jobber drills



- P** • $\geq \varnothing 4.00$ mm with 3-flats on shank • 3-flats on shank prevents slipping in the chuck • for use in drilling machines with 3-jaw chucks • optimally suited for hand drilling machines and pillar drill machines • 4-facet point grind with split point $\geq \varnothing 1.000$ • low feed force • fastest drilling progress
- M** •
- K** •
- N** • for universal application
- S** ○
- H**

Tool material	HSCO
Surface	
Cutting direction	



Article no. **9000**

d1		l1	l2	Code no.
mm	inch	mm	mm	
1.000		34.000	12.000	1.000
1.500		40.000	18.000	1.500
1.590	1/16	43.000	20.000	1.590
1.980	5/64	49.000	24.000	1.980
2.000		49.000	24.000	2.000
2.380	3/32	57.000	30.000	2.380
2.500		57.000	30.000	2.500
2.780	7/64	61.000	33.000	2.780
3.000		61.000	33.000	3.000
3.180		65.000	36.000	3.180
3.200		65.000	36.000	3.200
3.300		65.000	36.000	3.300
3.500		70.000	39.000	3.500
3.570	9/64	70.000	39.000	3.570
3.970	5/32	75.000	43.000	3.970
4.000		75.000	43.000	4.000
4.200		75.000	43.000	4.200
4.370	11/64	80.000	47.000	4.370
4.500		80.000	47.000	4.500
4.760	3/16	86.000	52.000	4.760
5.000		86.000	52.000	5.000
5.100		86.000	52.000	5.100
5.160	13/64	86.000	52.000	5.160
5.200		86.000	52.000	5.200
5.500		93.000	57.000	5.500
5.560	7/32	93.000	57.000	5.560
5.950	15/64	93.000	57.000	5.950
6.000		93.000	57.000	6.000
6.350	1/4	101.000	63.000	6.350
6.500		101.000	63.000	6.500
6.750	17/64	109.000	69.000	6.750
6.800		109.000	69.000	6.800
7.000		109.000	69.000	7.000
7.150		109.000	69.000	7.150
7.500		109.000	69.000	7.500
7.540	19/64	117.000	75.000	7.540

d1		l1	l2	Code no.
mm	inch	mm	mm	
7.940	5/16	117.000	75.000	7.940
8.000		117.000	75.000	8.000
8.330	21/64	117.000	75.000	8.330
8.500		117.000	75.000	8.500
8.730	11/32	125.000	81.000	8.730
9.000		125.000	81.000	9.000
9.130	23/64	125.000	81.000	9.130
9.500		125.000	81.000	9.500
9.530		133.000	87.000	9.530
9.920	25/64	133.000	87.000	9.920
10.000		133.000	87.000	10.000
10.200		133.000	87.000	10.200
10.320	13/32	133.000	87.000	10.320
10.500		133.000	87.000	10.500
10.720	27/64	142.000	94.000	10.720
11.000		142.000	94.000	11.000
11.110	7/16	142.000	94.000	11.110
11.500		142.000	94.000	11.500
11.510	29/64	142.000	94.000	11.510
11.910	15/32	151.000	101.000	11.910
12.000		151.000	101.000	12.000
12.300	31/64	151.000	101.000	12.300
12.500		151.000	101.000	12.500
12.700	1/2	151.000	101.000	12.700
13.000		151.000	101.000	13.000



Jobber drills



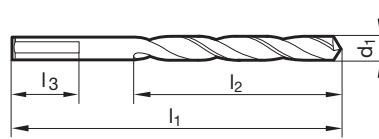
- P** • $\geq \text{Ø } 4.00 \text{ mm}$ with 3-flats on shank • 3-flats on shank prevents slipping in the chuck • for use in drilling machines with 3-jaw chucks • optimally suited for hand drilling machines and pillar drill machines • 4-facet point grind with split point $\geq \text{Ø } 1.000$ • low feed force • fastest drilling progress
- M** •
- K** •
- N** •
- S** ○ for universal application
- H**

Tool material	HSCO
Surface	
Cutting direction	

SEMI-STANDARD



Ø 1,000 - 5,000: Set with 2 pieces per package.
Price is per set.
> Ø 5,000: 1 pieces per package. Price is per set.



Article no. **9000**

d1		l1	l2	Code no.
mm	inch	mm	mm	
1.000		34.000	12.000	1.001
1.500		40.000	18.000	1.501
1.590	1/16	43.000	20.000	1.591
1.980	5/64	49.000	24.000	1.981
2.000		49.000	24.000	2.001
2.380	3/32	57.000	30.000	2.381
2.500		57.000	30.000	2.501
2.780	7/64	61.000	33.000	2.781
3.000		61.000	33.000	3.001
3.180		65.000	36.000	3.181
3.200		65.000	36.000	3.201
3.300		65.000	36.000	3.301
3.500		70.000	39.000	3.501
3.570	9/64	70.000	39.000	3.571
3.970	5/32	75.000	43.000	3.971
4.000		75.000	43.000	4.001
4.200		75.000	43.000	4.201
4.370	11/64	80.000	47.000	4.371
4.500		80.000	47.000	4.501
4.760	3/16	86.000	52.000	4.761
5.000		86.000	52.000	5.001
5.100		86.000	52.000	5.101
5.160	13/64	86.000	52.000	5.161
5.200		86.000	52.000	5.201
5.500		93.000	57.000	5.501
5.560	7/32	93.000	57.000	5.561
5.950	15/64	93.000	57.000	5.951
6.000		93.000	57.000	6.001
6.350	1/4	101.000	63.000	6.351
6.500		101.000	63.000	6.501
6.750	17/64	109.000	69.000	6.751
6.800		109.000	69.000	6.801
7.000		109.000	69.000	7.001
7.150		109.000	69.000	7.151
7.500		109.000	69.000	7.501
7.540	19/64	117.000	75.000	7.541

d1		l1	l2	Code no.
mm	inch	mm	mm	
7.940	5/16	117.000	75.000	7.941
8,000		117,000	75,000	8,001
8,330	21/64	117,000	75,000	8,331
8,500		117,000	75,000	8,501
8,730	11/32	125,000	81,000	8,731
9,000		125,000	81,000	9,001
9,130	23/64	125,000	81,000	9,131
9,500		125,000	81,000	9,501
9,530		133,000	87,000	9,531
9,920	25/64	133,000	87,000	9,921
10,000		133,000	87,000	10,001
10,200		133,000	87,000	10,201
10,320	13/32	133,000	87,000	10,321
10,500		133,000	87,000	10,501
10,720	27/64	142,000	94,000	10,721
11,000		142,000	94,000	11,001
11,110	7/16	142,000	94,000	11,111
11,500		142,000	94,000	11,501
11,510	29/64	142,000	94,000	11,511
11,910	15/32	151,000	101,000	11,911
12,000		151,000	101,000	12,001
12,300	31/64	151,000	101,000	12,301
12,500		151,000	101,000	12,501
12,700	1/2	151,000	101,000	12,701
13,000		151,000	101,000	13,001

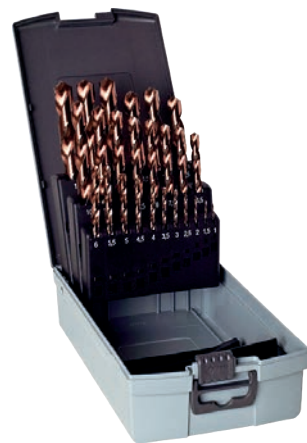


Twist drill sets



- P** • $\geq \text{Ø } 4.00 \text{ mm}$ with 3-flats on shank • 3-flats on shank prevents slipping in the chuck • for use in drilling machines with 3-jaw chucks • optimally suited for hand drilling machines and pillar drill machines • 4-facet point grind with split point $\geq \text{Ø } 1.000$ • low feed force • fastest drilling progress
- M** •
- K** •
- N** • for universal application
- S** ○
- H**

Tool material	HSCO
Surface	
Cutting direction	



Article no. **9001**

d1	increasing by	Pieces/set	Code no.
mm	mm		
1.0-10.0	0.5	19	0.013
1.0-13.0	0.5	25	0.014

SpyroTec

THE TWISTED HSS-/HSCO COUNTERSINK WITH 3-FLATS ON SHANK



FOR FURTHER INFORMATION
PLEASE CONTACT US!



THE ALL-ROUNDER FOR YOUR DRILLING PROCESSES: SHARP, FAST, SAFE.



GÜHRING

P.O. Box 100247 • 72423 Albstadt
Herderstrasse 50-54 • 72458 Albstadt
Germany

T +49 74 31 17-0
F +49 74 31 17-21 279

info@guehring.de
www.guehring.com

No liability can be accepted for printing errors or technical changes of any kind.
Our Conditions of Sale and Terms of Payment apply. Available on request.
Printed in Germany | 2020