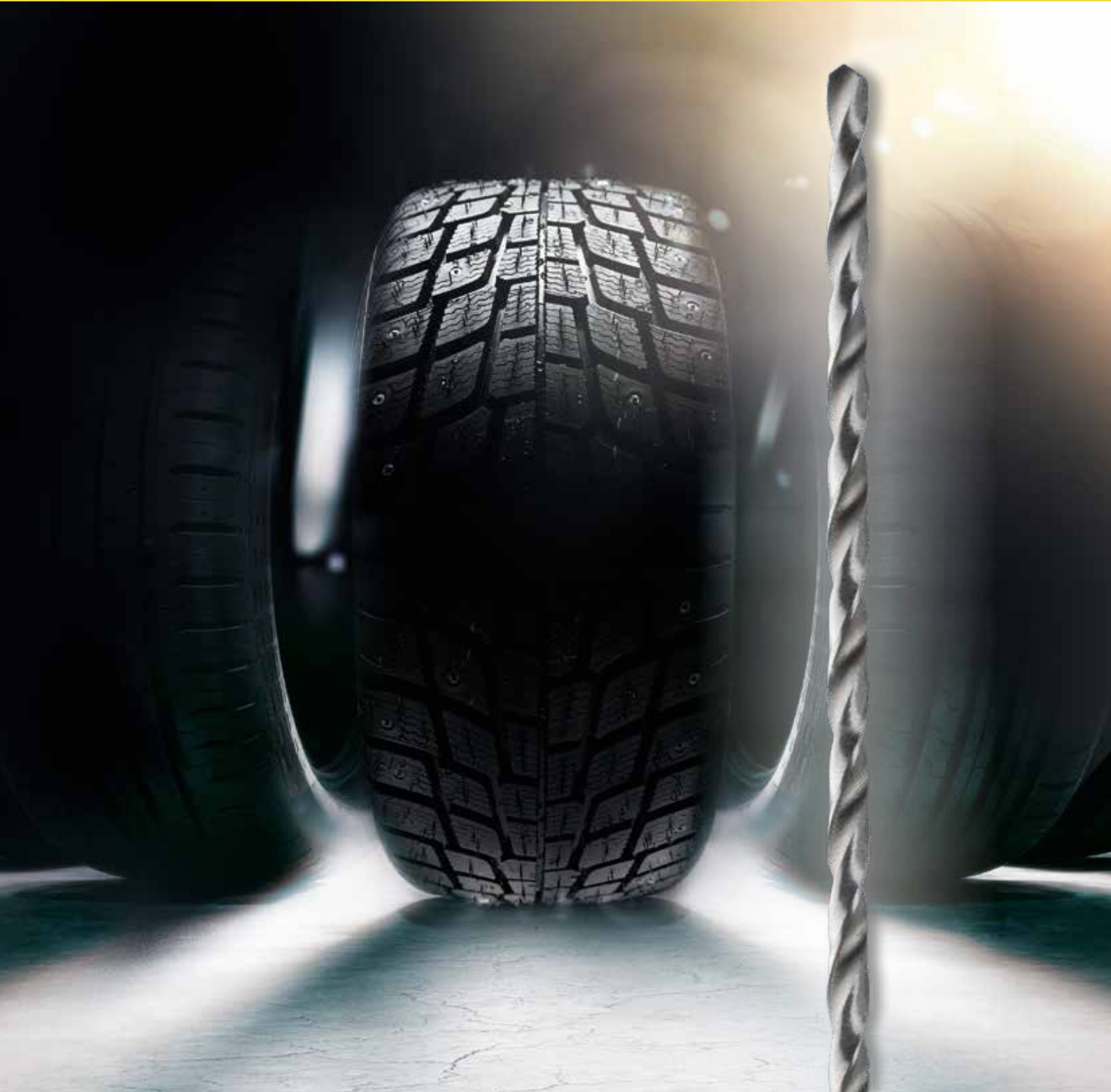


GÜHRING



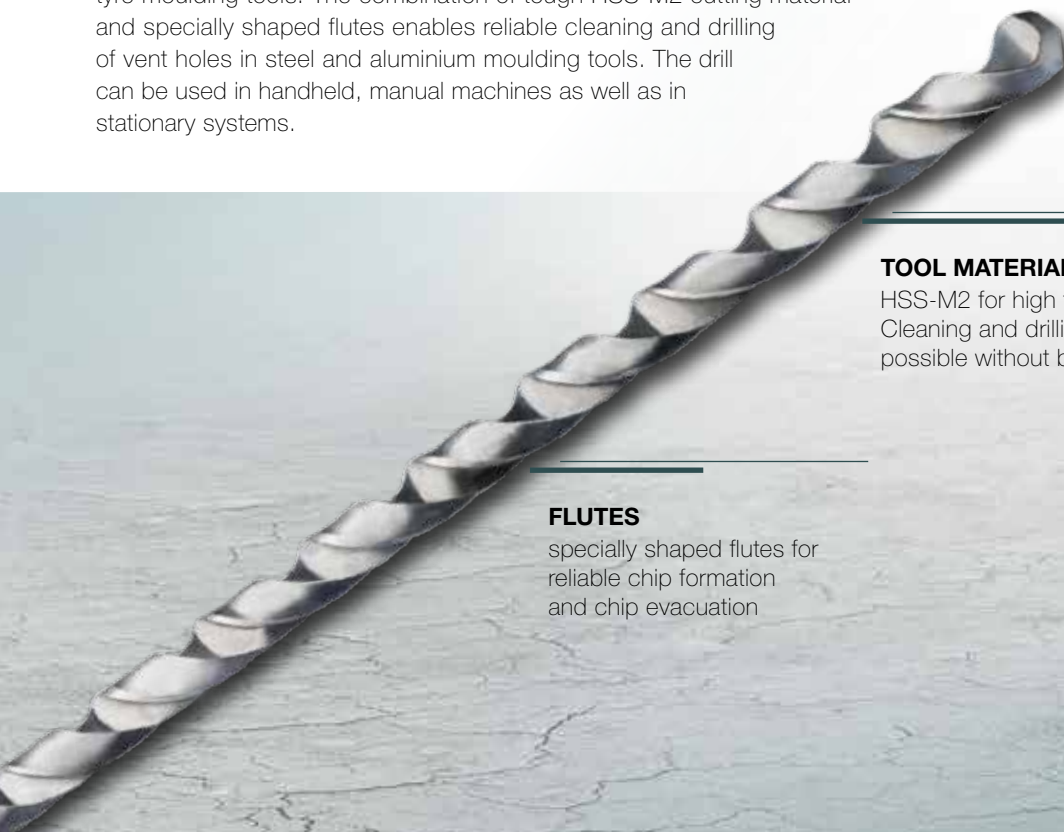
HSS twist drills

for cleaning out and drilling holes in tyre tread moulds

GÜHRING – YOUR WORLDWIDE PARTNER



The final step in tyre production is vulcanisation where blanks are pressed into moulds or mould segments under heat and pressure and the tyre receives its final tread. If air is trapped between the blank and the mould, this drastically reduces production quality. This is prevented by small openings in the profile form through which the air can escape during the process. These openings must be kept free of residues for the entire life of the mould. We have developed an extra long drill for use on tyre moulding tools: The combination of tough HSS-M2 cutting material and specially shaped flutes enables reliable cleaning and drilling of vent holes in steel and aluminium moulding tools. The drill can be used in handheld, manual machines as well as in stationary systems.



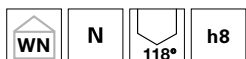
POINT ANGLE
relieved cone 118°

TOOL MATERIAL
HSS-M2 for high toughness:
Cleaning and drilling of vent holes
possible without breakage.

FLUTES
specially shaped flutes for
reliable chip formation
and chip evacuation

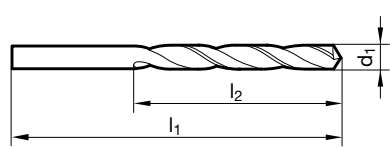


Extra length twist drills



- P** ○ • relieved cone • common diameters available in different lengths
- M** ○
- K** ○
- N** ● • for cleaning out and drilling vent holes in industrial mould making, especially in tyre manufacturing
- S** ○
- H** ○

Tool material	HSS
Surface	○
Cutting direction	Ⓜ



Article no. **6403**

d1		l1	l2	Code no.
mm	inch	mm	mm	
0.500		50.00	25.00	0.500
0.550		50.00	25.00	0.550
0.570	#74	50.80	25.40	0.570
0.570	#74	76.20	25.40	0.571
0.600		60.00	30.00	0.600
0.700		60.00	30.00	0.700
0.700		80.00	50.00	0.701
0.740	#69	50.80	25.40	0.740
0.740	#69	76.20	50.80	0.741
0.800		60.00	30.00	0.800
0.800		80.00	50.00	0.801
0.800		120.00	60.00	0.802
1.000		60.00	40.00	1.000
1.000		80.00	50.00	1.001
1.000		100.00	70.00	1.002
1.000		150.00	75.00	1.003
1.020	#60	76.20	50.80	1.020
1.020	#60	152.40	63.50	1.021
1.090	#57	76.20	50.80	1.090
1.090	#57	101.60	76.20	1.091
1.090	#57	152.40	76.20	1.092
1.190	3/64	76.20	50.80	1.190
1.190	3/64	101.60	76.20	1.191
1.190	3/64	152.40	101.60	1.192
1.200		100.00	70.00	1.200
1.200		150.00	100.00	1.201
1.300		100.00	70.00	1.300
1.300		150.00	100.00	1.301
1.320	#55	101.60	76.20	1.320
1.320	#55	152.40	101.60	1.321

d1		l1	l2	Code no.
mm	inch	mm	mm	
1.400		100.00	70.00	1.400
1.400		150.00	100.00	1.401
1.500		100.00	70.00	1.500
1.500		150.00	100.00	1.501
1.590	1/16	76.20	50.80	1.590
1.590	1/16	101.60	76.20	1.591
1.590	1/16	152.40	101.60	1.592
1.590	1/16	203.20	101.60	1.593
1.600		150.00	100.00	1.600
1.700		150.00	100.00	1.700
1.780	#50	101.60	76.20	1.780
1.780	#50	152.40	101.60	1.781
1.800		100.00	70.00	1.800
1.800		150.00	100.00	1.801
1.900		150.00	100.00	1.900
2.000		100.00	70.00	2.000
2.000		150.00	100.00	2.001
2.100		100.00	70.00	2.100
2.380	3/32	114.30	76.20	2.380
2.380	3/32	152.40	101.60	2.381
2.380	3/32	203.20	101.60	2.382
2.380	3/32	203.20	152.40	2.383
2.400		100.00	70.00	2.400
2.400		205.00	150.00	2.401
2.600		150.00	100.00	2.600

DRILLING

MILLING

THREADING

REAMING

COUNTERSINKING / DEBURRING

DEEP HOLE DRILLING

PCD / PCBN

GROOVING SYSTEMS

END MACHINING

CLAMPING SYSTEMS

SPECIAL TOOLS

SERVICES



since 1898

GÜHRING

P.O. Box 100247 • 72423 Albstadt
Herderstrasse 50-54 • 72458 Albstadt
Germany

T +49 74 31 17-0
F +49 74 31 17-21 279

info@guehring.de
www.guehring.com

No liability can be accepted for printing errors or technical changes of any kind.
Our Conditions of Sale and Terms of Payment apply. Available on request.